

Series 52

List of Modules 52/MX

© 2014 DHD Deubner Hoffmann Digital GmbH

Version: 1.182.0

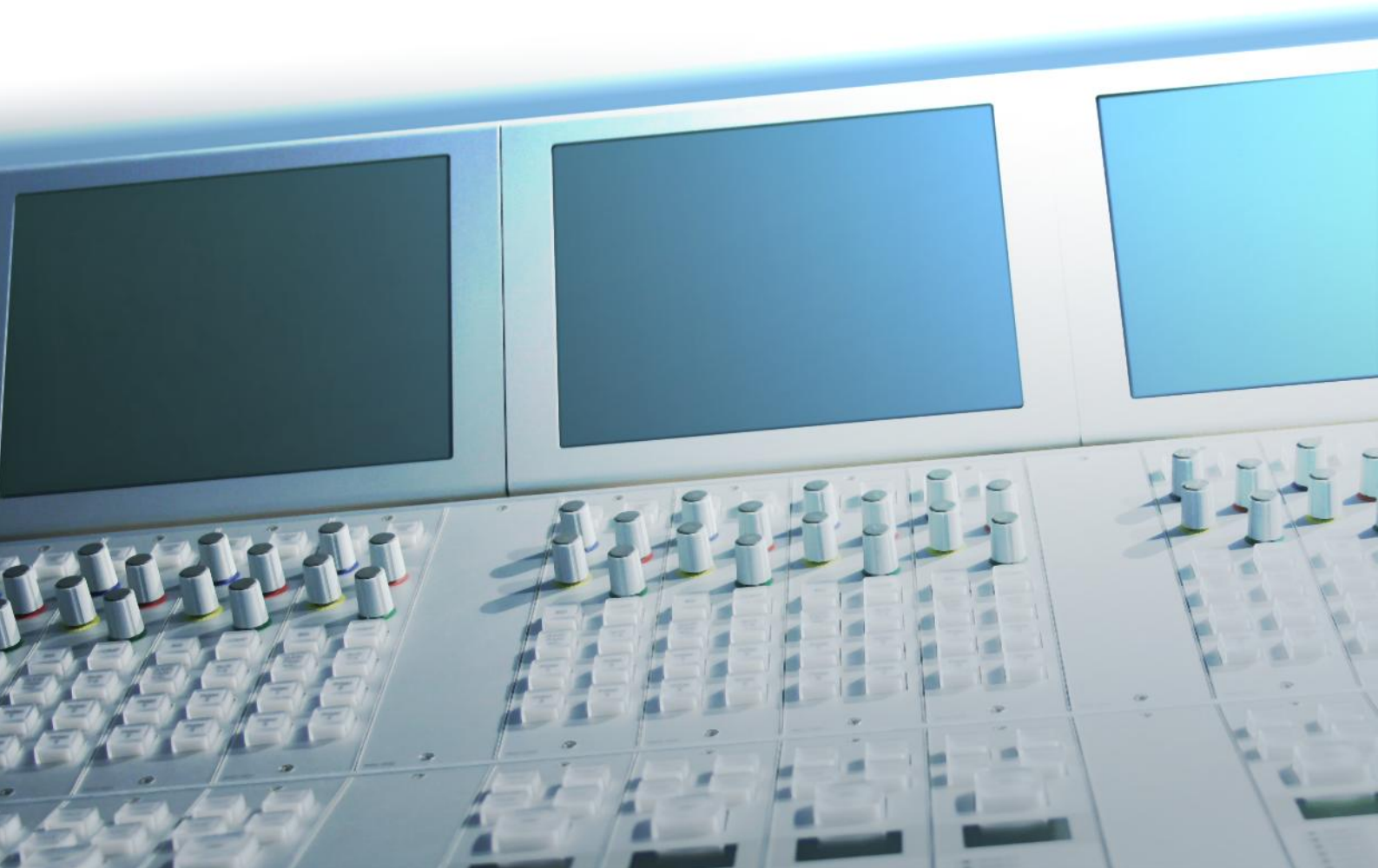


Table of Contents

1	Overview	1
2	Terms of Use - Legal Disclaimer	2
3	About this Book	3
4	52/MX Fader and Control Modules, L-size	5
1	52-4230A - Fader/Encoder Module, P&G	5
2	52-4231B - Mot-Fader/Encoder Module, P&G	5
3	52-4240B - Fader Module, P&G	6
4	52-4241B - Motor Fader Module, P&G	6
5	52-4250C - Fader/Encoder Module, P&G	7
6	52-4260B - Fader Module, P&G	7
7	52-4261B - Motor Fader Module, P&G	8
8	52-4401B - Control Module, 1 potentiometer	8
9	52-4402B - Control Module, 2 potentiometers	9
10	52-4404B - Control Module, 4 potentiometers	9
11	52-4410A - Control Module, 17 buttons	10
12	52-4411A - Pushbutton Module, 11 buttons	10
13	52-4412A - Control Module, 19 buttons	11
14	52-4414A - TFT Control Module, L-size	11
15	52-4421A - Pushbutton Module, 21 buttons	12
16	52-4422A - Control Module, 12 buttons	12
17	52-4424A - Loudspeaker/Control Module,large	13
18	52-4424B - Loudspeaker/Control Module,large	13
19	52-4490A - Lower blanking plate	14
5	52/MX Control Modules, S-size	14
1	52-4302A - Control Module, 2 encoders	14
2	52-4304A - TFT Control Module, 4 encoders	15
3	52-4306A - TFT Control Module, 6 encoders	15
4	52-4305B - Control Module, 2 potentiometers	16
5	52-4505A - Pushbutton Module, 5 buttons	16
6	52-4516A - Pushbutton Module, 16 buttons	17
7	52-4527A - Loudspeaker/Control Module	17

8	52-4527B - Loudspeaker/Control Module	18
9	52-4528A - Line Control Module	18
10	52-4590A - Upper Blanking Plate	19
11	52-4592A - Upper Microphone XLR Plate	19
12	52-4592B - Upper Mic/Headphone Plate	19
6	52/MX TFT/Touch Displays	20
1	52-4015C - TFT/Touch Display, 8.4"	20
2	52-3014A - Console mounting kit for 52-4015	21
3	52-3015A - Table Top Stand for 52-4015	21
4	52-3016A - Adjustable Stand for 52-4015	22
5	52-4018A - TFT/Touch Display, 7" IPS	22
6	52-3017A - Table Top Stand for 52-4017	23
7	52-3010A - Console mounting kit for 52-4018	23
8	52-4515C - TFT Display, touch, for housing	24
7	52/MX Console Frames, angled mounting	24
1	52-3804C - Console Frame, 4 pos. L-size	25
2	52-3806C - Console Frame, 6 pos. L-size	25
3	52-3808C - Console Frame, 8 pos. L-size	26
4	52-3812C - Console Frame, 12 pos. L-size	26
5	52-3816C - Console Frame, 16 pos. L-size	27
6	52-3820C - Console Frame, 20 pos. L-size	27
7	52-3824C - Console Frame, 24 pos. L-size	28
8	52-4804C - Console Frame, 4 pos. L/S-size	28
9	52-4808C - Console Frame, 8 pos. L/S-size	29
10	52-4812C - Console Frame, 12 pos. L/S-size	29
11	52-4813C - Console Frame, 12+ pos. L/S-size	30
12	52-4816C - Console Frame, 16 pos. L/S-size	30
13	52-4817C - Console Frame, 16+ pos. L/S-size	31
14	52-4820C - Console Frame, 20 pos. L/S-size	31
15	52-4821C - Console Frame, 20+ pos. L/S-size	32
16	52-4824C - Console Frame, 24 pos. L/S-size	32
17	52-4825C - Console Frame, 24+ pos. L/S-size	33
18	52-4829C - Console Frame, 28+ pos. L/S-size	33
19	52-4908C - Console Frame, 8+ pos. L/S-size	34
20	52-4912C - Console Frame, 12+ pos. L/S-size	34
21	52-4916C - Console Frame, 16+ pos. L/S-size	35
22	52-4920C - Console Frame, 20+ pos. L/S-size	35

23	52-4924C - Console Frame, 24+ pos. L/S-size	36
24	52-4928C - Console Frame, 28+ pos. L/S-size	36
8	52/MX Table Installation Frames, flat mounting	36
1	52-3604A - Table Inst. Frame, 4 pos. L-size	37
2	52-3604C - Table Inst. Frame, 4 pos. L-size	37
3	52-3605C - Table Inst. Frame, 5 pos. L-size	38
4	52-3606C - Table Inst. Frame, 6 pos. L-size	38
5	52-3608C - Table Inst. Frame, 8 pos. L-size	39
6	52-3610C - Table Inst. Frame, 10 pos. L-size	39
7	52-3612C - Table Inst. Frame, 12 pos. L-size	40
8	52-3616C - Table Inst. Frame, 16 pos. L-size	40
9	52-3654C - Table Inst. Frame, 4 pos. S-size	41
10	52-3656C - Table Inst. Frame, 6 pos. S-size	41
11	52-3658C - Table Inst. Frame, 8 pos. S-size	42
12	52-3660G - Table Inst. Frame, 10 pos. S-size	42
13	52-3662C - Table Inst. Frame, 12 pos. S-size	43
14	52-3666C - Table Inst. Frame, 16 pos. S-size	43
15	52-4604C - Table Inst. Frame, 4 pos. L/S	44
16	52-4608C - Table Inst. Frame, 8 pos. L/S	44
17	52-4612C - Table Inst. Frame, 12 pos. L/S	45
9	52/MX Table Top Box, S-size	45
1	52-3454C - Table Top Box, 4 pos. S-size	45
2	52-3456C - Table Top Box, 6 pos. S-size	46
3	52-3458C - Table Top Box, 8 pos. S-size	47
10	52/MX 19" Installation Frames	47
1	52-3660F - 19" Inst. Frame, 1 TFT + 5 pos.	47
2	52-3660D - 19" housing for 2xTFT	48
11	19" Q-Panel	48
1	52-6500A - XR/MX Q-Panel Frame, 19" 1U	48
2	52-6501A - XR/MX Q-Panel Frame, half size	49
3	52-6504A - Q-Panel, 2 encoders, 4 buttons	49
4	52-6505A - Q-Panel, 4 large buttons	50
5	52-6510A - Q-Panel, 10 push buttons	50
6	52-6590A - Q-Panel, blank	51
7	52-6509A - GPIO push button module	51
8	52-6592A - Q-Panel, front 2 x D-Sub-15	52

Index

1 Overview

This part of the manual represents a list of the currently available modules and parts for the following DHD system:

Series 52 52/MX

This list of modules and parts is meant to be upgraded from time to time without public notification. Please check version and release date of a document. You can find the most current version of this document on our website:

- [HTML Release, more detailed](#)
- [PDF Release](#) (this document)

2 Terms of Use - Legal Disclaimer

Series 52

List of Modules Series 52

© 2014 DHD Deubner Hoffmann Digital GmbH

This manual is copyright of DHD. It might be distributed and copied as long as it is copied completely as a whole and this copyright notice is included.

No part of this document may be copied or distributed without prior written permission of DHD Deubner Hoffmann Digital GmbH.

Windows is a registered trademark of Microsoft Corp., Redmond, Wash., USA. All other trademarks are the property of their respective owners.

Specifications and design are subject to change without notice.





The content of this document is for information only. The information presented in this document does not form part of any quotation or contract, is believed to be accurate and reliable and may be changed without notice. No liability will be accepted by the publisher for any consequence of its use. Publication thereof does neither convey nor imply any license under patent rights or other industrial or intellectual property rights.

Version 1.182.0, 06.10.2014

3 About this Book

How to Use this Book


Product Status Information:

- | | | |
|---|---|---|
|  | PREFERRED PRODUCT | regular production, mostly sufficient stock |
|  | PRODUCT WITH
POTENTIAL DELIVERY
TIMES | production start requires prior order, delivery times depend on module type and vary from a few days to several weeks |
|  | ASK FOR QUOTATION | production and prices on enquiry, a minimum order quantity might apply depending on module type, production start requires prior order, delivery times depend on module type and vary from a few days to several weeks, no return possible, documentation might be incomplete or unavailable, module might be not available in the Toolbox configuration software, a prior current quotation is always required |
|  | PRODUCT DISCONTINUED | no restaging possible, please ask for potential alternatives |

Depending on production batch sizes and spares inventory, there might still be stocks of items with yellow, blue, red status.

Even for preferred products (green), delivery times might arise, if scheduled productions cannot be realised due to delays of parts from our suppliers, or if the estimated amount has been depleted for large orders.

The Navigation Tree

You can find the navigation tree on the left-hand-side of the PDF document. Via the entries of this tree you can directly reach the several chapters and sections of this document. Click onto the text or the  symbol of an entry to display its content.

If a chapter includes further sections, you will find a plus-symbol in front of the entry in the navigation tree. Either you can click onto this plus-sign or you double click the text or the symbol of the entry to make the sub-branches of the further sections visible.

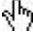

Search

You can find an alphabetical ordered list of keywords at the end of the document. Please see the page numbers in this index to find the respective keywords in the document.

Moreover, you can use the search function of your PDF reader to seek for any words.







Links

Links are underlined to separate them from the rest of the text. These links can be a connection to other chapters or sections in the same document or to an URL (internet address).

- Same document: The hand symbol  appears if you move the mouse over the link.
- URL: The hand symbol with an additional w  appears if you move the mouse over the link.

Please notice, that you need an active internet connection to be able to execute a link to an URL.

The Meaning of Advices in the Text

<p>Warning</p> 	<p>The demands and advices in this fields should be followed unconditional, because otherwise hardware and software products, data bases, as well as persons may suffer a loss.</p>
<p>Important</p> 	<p>The demands and advices in this fields should be followed, because these contents are necessary for the proper operation of the DHD systems.</p>
<p>Note</p> 	<p>Recommendations and further information are marked as notes. Sometimes you will also find off-topic content in this field, which is related to the actual topic.</p>
<p>Tip</p> 	<p>Tips are helpful advices, which should make work with DHD systems easier.</p>
<p>Weblink</p> 	<p>In this fields you can find links to websites, which include for example an other manual or the possibility to download a driver for the respective DHD system.</p> <p>Please notice, that you need an active internet connection to be able to execute a link to an URL.</p>
<p>Download</p> 	<p>You can directly open and download a file if the respective link is marked as download link (file link).</p>

4 52/MX Fader and Control Modules, L-size

293mm length for L-size frames and consoles or lower section of L/S-size frames and consoles

4.1 52-4230A - Fader/Encoder Module, P&G

STATUS : ● PREFERRED PRODUCT



52-4230A

5 small EAO pushbuttons, 2 colours,

1 large NKK push buttons, 2 colours,

film caps, 1 rotary encoder

- . 32 character ASCII LED display
- . 100mm Penny&Giles Fader
- . DHD console controller interface
- . 293mm x 42,5mm, 11.54" x 1.67"

weight: 0.2 kg

power consumption: 0.86 W

4.2 52-4231B - Mot-Fader/Encoder Module, P&G

STATUS : ● PREFERRED PRODUCT



52-4231B

5 small EAO pushbuttons, 2 colours,

1 large NKK push buttons, 2 colours,

film caps, 1 rotary encoder

- . 32 character ASCII LED display
- . 100mm motorfader, Penny & Giles
- . DHD console controller interface
- . 293mm x 42,5mm, 11.54" x 1.67"

weight: 0.3 kg

power consumption: 1.20 W

4.3 52-4240B - Fader Module, P&G

STATUS : ● **PREFERRED PRODUCT**



52-4240B

4 small EAO pushbuttons, 2 colours,

1 large EAO pushbutton, 3 colours,

film caps

- . 32 character ASCII LED display
- . 100mm Penny & Giles fader
- . DHD console controller interface
- . 293mm x 42.5mm, 11.54" x 1.67"

weight: 0.2 kg

power consumption: 0.60 W

4.4 52-4241B - Motor Fader Module, P&G

STATUS : ● **PREFERRED PRODUCT**



52-4241B

4 small EAO pushbuttons, 2 colours,

1 large EAO pushbutton, 3 colours,

film caps

- . 32 character ASCII LED display
- . 100mm motorfader, Penny & Giles
- . DHD console controller interface
- . 293mm x 42,5mm, 11.54" x 1.67"

weight: 0.7 kg

power consumption: 1.10 W

4.5 52-4250C - Fader/Encoder Module, P&G

STATUS : ● **PREFERRED PRODUCT**



52-4250C

FLAT NKK button version, 2 colour

3 small buttons, 2 colours, 1 large

button 3 colours, film caps

- . 32 character ASCII LED display
- . 100mm Penny & Giles fader
- . 293mm x 42,5mm, 11.54" x 1.67"

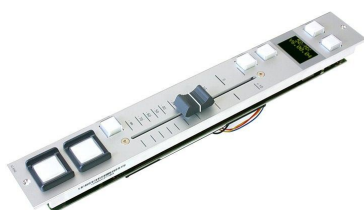
Note: Replaces 52-4250A!

weight: 0.2 kg

power consumption: 0.44 W

4.6 52-4260B - Fader Module, P&G

STATUS : ● **PREFERRED PRODUCT**



52-4260B

5 small EAO pushbuttons, 2 colours,

2 large NKK push buttons, 2 colours,

film caps

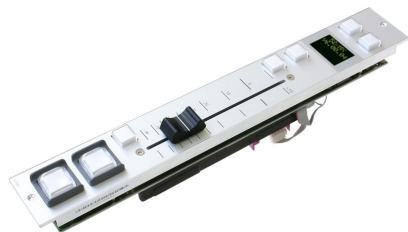
- . 32 character ASCII LED display
- . 100mm Penny & Giles fader
- . DHD console controller interface
- . 293mm x 42,5mm, 11.54" x 1.67"

weight: 0.2 kg

power consumption: 0.61 W

4.7 52-4261B - Motor Fader Module, P&G

STATUS : ● **PREFERRED PRODUCT**



52-4261B

5 small EAO pushbuttons, 2 colours,
 2 large NKK push buttons, 2 colours,
 film caps
 . 32 character ASCII LED display
 . 100mm motorfader, Penny & Giles
 . DHD console controller interface
 . 293mm x 42,5mm, 11.54" x 1.67"
 weight: 0.3 kg
 power consumption: 1.10 W

4.8 52-4401B - Control Module, 1 potentiometer

STATUS : ● **PRODUCT WITH POTENTIAL DELIVERY TIMES**



52-4401B

8 small EAO pushbuttons, 2 colours,
 6 large EAO pushbuttons, 3 colours,
 film caps
 . 1 software definable potentiometer
 . DHD console controller interface
 . 293mm x 42,5mm, 11.54" x 1.67"
 weight: 0.2 kg
 power consumption: 0.63 W

4.9 52-4402B - Control Module, 2 potentiometers

STATUS : ● PRODUCT WITH POTENTIAL DELIVERY TIMES



52-4402B

16 small EAO pushbuttons, 2 colours,

1 large EAO pushbutton, 3 colours,

film caps

- 2 software definable potentiometers
- DHD console controller interface
- 293mm x 42,5mm, 11.54" x 1.67"

weight: 0.2 kg

power consumption: 1.01 W

4.10 52-4404B - Control Module, 4 potentiometers

STATUS : ● PRODUCT WITH POTENTIAL DELIVERY TIMES



52-4404B

10 small EAO pushbuttons, 2 colours,

1 large EAO pushbutton, 3 colours,

film caps

- 4 software definable potentiometers
- DHD console controller interface
- 293mm x 42,5mm, 11.54" x 1.67"

weight: 0.2 kg

power consumption: 1.00 W

4.11 52-4410A - Control Module, 17 buttons

STATUS : ● PREFERRED PRODUCT



52-4410A

16 small EAO pushbuttons, 2 colours,

1 large EAO pushbutton, 3 colours,

film caps

- . 32 character ASCII LED display
- . optical rotary encoder
- . DHD console controller interface
- . 293mm x 42,5mm, 11.54" x 1.67"

weight: 0.2 kg

power consumption: 0.88 W

4.12 52-4411A - Pushbutton Module, 11 buttons

STATUS : ● PREFERRED PRODUCT



52-4411A

11 large EAO pushbuttons, 3 colours,

film caps

- . DHD console controller interface
- . 293mm x 42,5mm, 11.54" x 1.67"

weight: 0.2 kg

power consumption: 0.48 W

4.13 52-4412A - Control Module, 19 buttons

STATUS : ● **PREFERRED PRODUCT**



52-4412A

18 small EAO pushbuttons, 2 colours,

1 large EAO pushbutton, 3 colours,

film caps

- . 32 character ASCII LED display
- . 2 rotary encoders
- . DHD console controller interface
- . 293mm x 42,5mm, 11.54" x 1.67"

weight: 0.2 kg

power consumption: 1.04 W

4.14 52-4414A - TFT Control Module, L-size

STATUS : ● **PREFERRED PRODUCT**



52-4414A

4 rotary encoders for interoperating

with 52-4015 TFT display

- . 16 small EAO pushbuttons, 2 colours,

1 large EAO pushbutton, 3 colours,

film caps

- . DHD console controller interface
- . 293mm x 42,5mm, 11.54" x 1.67"

weight: 0.2 kg

power consumption: 1.01 W

4.15 52-4421A - Pushbutton Module, 21 buttons

STATUS : ● **PRODUCT WITH POTENTIAL DELIVERY TIMES**



52-4421A

20 small EAO pushbuttons, 2 colours,

1 large EAO pushbutton, 3 colours,

film caps

- . DHD console controller interface
- . 293mm x 42,5mm, 11.54" x 1.67"

weight: 0.2 kg

power consumption: 0.82 W

4.16 52-4422A - Control Module, 12 buttons

STATUS : ● **PREFERRED PRODUCT**



52-4422A

6 small EAO pushbuttons, 2 colours,

6 large EAO pushbuttons, 3 colours,

film caps

- . 32 character ASCII LED display
- . 2 rotary encoders
- . DHD console controller interface
- . 293mm x 42,5mm, 11.54" x 1.67"

weight: 0.2 kg

power consumption: 0.61 W

4.17 52-4424A - Loudspeaker/Control Module,large

STATUS : ● PRODUCT WITH POTENTIAL DELIVERY TIMES



52-4424A

11 EAO pushbuttons, 2/3 colours, film

1 encoder, 3 potentiometers

Talk Back/PFL loudspeaker with

3W amplifier and balanced line

level interface, analog

- . DHD console controller interface
- . 293mm x 85mm, 7.6" x 3.35"

weight: 0.6 kg

power consumption: 10.39 W

4.18 52-4424B - Loudspeaker/Control Module,large

STATUS : ● PREFERRED PRODUCT



52-4424B

11 EAO pushbuttons, 2/3 colours, film

1 encoder, 3 potentiometers

Talk Back/PFL loudspeaker with

3W amplifier and balanced line

interface for 52-4060 APC controller

- . DHD console controller interface
- . 293mm x 85mm, 7.6" x 3.35"

weight: 0.6 kg

power consumption: 10.39 W

4.19 52-4490A - Lower blanking plate

STATUS : ● **PREFERRED PRODUCT**



52-4490A

293mm x 42,5mm 11.54" x 1.67"

needs to be ordered if necessary

weight: 0.1 kg

5 52/MX Control Modules, S-size

193mm length for S-size frames and consoles or upper section of L/S-size frames and consoles

5.1 52-4302A - Control Module, 2 encoders

STATUS : ● **PREFERRED PRODUCT**



52-4302A

2 rotary encoders

32 character ASCII LED display

8 EAO pushbuttons, 2 colours,

film caps

. DHD console controller interface
. 193mm x 42.5mm, 7.6" x 1.67"

weight: 0.1 kg

power consumption: 0.46 W

5.2 52-4304A - TFT Control Module, 4 encoders

STATUS : ● PREFERRED PRODUCT



52-4304A

4 rotary encoders for interoperating

with 52-4015 TFT display

· 10 EAO pushbuttons, 2 colours,
film caps

· DHD console controller interface
· 193mm x 42,5mm, 7.6" x 1.67"

weight: 0.1 kg

power consumption: 0.49 W

5.3 52-4306A - TFT Control Module, 6 encoders

STATUS : ● PREFERRED PRODUCT



52-4306A

6 rotary encoders for interoperating

with 52-4015 TFT display

· 6 EAO pushbuttons, 2 colours,
film caps

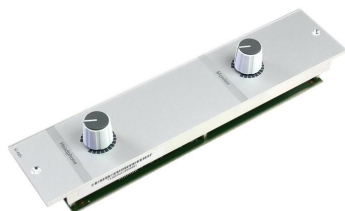
· DHD console controller interface
· 193mm x 42,5mm, 7.6" x 1.67"

weight: 0.1 kg

power consumption: 0.28 W

5.4 52-4305B - Control Module, 2 potentiometers

STATUS : ● PRODUCT WITH POTENTIAL DELIVERY TIMES



52-4305B

2 potentiometers for volume

controls, configurable

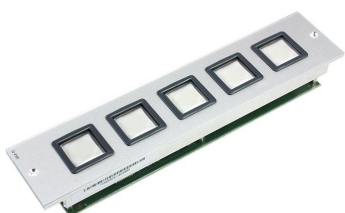
- . DHD console controller interface
- . 193mm x 42,5mm, 7.6" x 1.67"
- . "Monitor", "Headphone" labeled

weight: 0.1 kg

power consumption: 0.30 W

5.5 52-4505A - Pushbutton Module, 5 buttons

STATUS : ● PREFERRED PRODUCT



52-4505A

5 large pushbuttons, 2 colours,

film caps

- . DHD console controller interface
- . 193mm x 42,5mm, 7.6" x 1.67"

weight: 0.1 kg

power consumption: 0.53 W

5.6 52-4516A - Pushbutton Module, 16 buttons

STATUS : ● **PREFERRED PRODUCT**



52-4516A

16 EAO pushbuttons, 2 colours,

film caps

- . DHD console controller interface
- . 193mm x 42,5mm, 7.6" x 1.67"

weight: 0.1 kg

power consumption: 0.72 W

5.7 52-4527A - Loudspeaker/Control Module

STATUS : ● **PRODUCT WITH POTENTIAL DELIVERY TIMES**



52-4527A

2 rotary encoders

32 character ASCII LED display

10 EAO pushbuttons, 2 colours

Talk Back/PFL loudspeaker with

3W amplifier and analog line input

- . DHD console controller interface
- . 193mm x 85mm, 7.6" x 3.35"

weight: 0.4 kg

power consumption: 10.50 W

5.8 52-4527B - Loudspeaker/Control Module

STATUS : ● **PREFERRED PRODUCT**



52-4527B

2 rotary encoders

32 character ASCII LED display

10 EAO pushbuttons, 2 colours

Talk Back/PFL loudspeaker with

3W amplifier and analog line input

- . DHD console controller interface
- . 193mm x 85mm, 7.6" x 3.35"

weight: 0.4 kg

power consumption: 10.50 W

5.9 52-4528A - Line Control Module

STATUS : ● **PRODUCT WITH POTENTIAL DELIVERY TIMES**



52-4528A

8 EAO pushbuttons, 2 colours, film

8 encoders

4 displays, each 4 lines with

8 characters for 2 encoder functions

and value display

- . DHD console controller interface
- . 193mm x 85mm, 7.6" x 3.35"

weight: 0.3 kg

power consumption: 2.00 W

5.10 52-4590A - Upper Blanking Plate

STATUS : ● PREFERRED PRODUCT



52-4590A

193mm x 42,5mm, 7.6" x 1.67"

needs to be ordered if necessary

weight: 0.1 kg

5.11 52-4592A - Upper Microphone XLR Plate

STATUS : ● PREFERRED PRODUCT



52-4592A

passive XLR connector and cable

harness to rear XLR connector

- talk back microphone not included
- 193mm x 42,5mm, 7.6" x 1.67"

weight: 0.1 kg

5.12 52-4592B - Upper Mic/Headphone Plate

STATUS : ● PREFERRED PRODUCT



passive XLR connector and cable

harness to rear connector

- . talk back microphone not included
- . 193mm x 42,5mm
- . passive 6.3mm stereo connector for

headphone

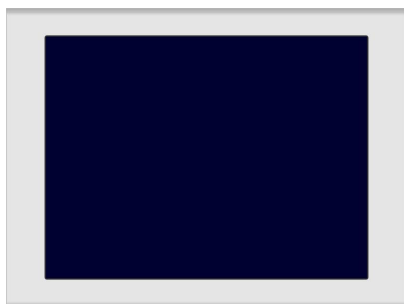
weight: 0.2 kg

6 52/MX TFT/Touch Displays

TFT/Touch Displays can be mounted to console frames, can be integrated into console, table installation and 19" rack installation frames or can be installed with a separate stand

6.1 52-4015C - TFT/Touch Display, 8.4"

STATUS : ● PREFERRED PRODUCT



8.4" / 21.4cm diagonal size

includes microcontroller

Ethernet control interface, RJ45

Power over Ethernet

dimensions 212mm x 159.5mm x 33.5mm,

replaces 52-4015A, 52-4015B

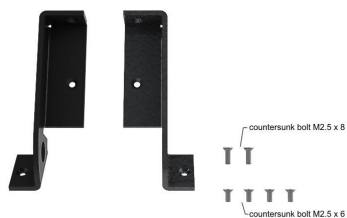
invers function available

weight: 1.0 kg

power consumption: 7.99 W

6.2 52-3014A - Console mounting kit for 52-4015

STATUS : ● PREFERRED PRODUCT



52-3014A

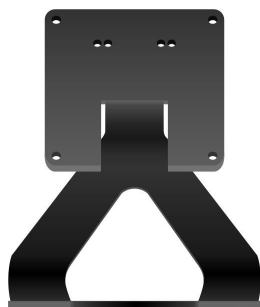
for 52-28xx console frames

for 52-38xx console frames

weight: 0.1 kg

6.3 52-3015A - Table Top Stand for 52-4015

STATUS : ● PREFERRED PRODUCT



52-3015A

table top stand for 52-4015

when display is not mounted to

console frames

stand not included in 52-4015

weight: 0.6 kg

6.4 52-3016A - Adjustable Stand for 52-4015

STATUS : ● PREFERRED PRODUCT



52-3016A

table top stand for 52-4015

when display is not mounted to

console frames

- stand not included in 52-4015
- adjustable angle

weight: 0.7 kg

6.5 52-4018A - TFT/Touch Display, 7" IPS

STATUS : ● PREFERRED PRODUCT



52-4018A

7" / 178mm diagonal size

IPS wide viewing angle

PCAP multi-touch

includes microcontroller

Ethernet power & control interface

minimum FW 7.4.16, replaces 52-4017A/B

weight: 0.9 kg

power consumption: 3.91 W

6.6 52-3017A - Table Top Stand for 52-4017

STATUS : ● PREFERRED PRODUCT



52-3017A

when display is not mounted to

console frame

weight: 0.5 kg

6.7 52-3010A - Console mounting kit for 52-4018

STATUS : ● PREFERRED PRODUCT

for 52-28xx console frames

for 52-38xx console frames

weight: 0.1 kg

6.8 52-4515C - TFT Display, touch, for housing

STATUS : ● **PREFERRED PRODUCT**



52-4515C

8.4" / 21.4cm diagonal size

Ethernet control interface, RJ45, PoE/APC

for housing 52-3660D/F, occupies 5 slots

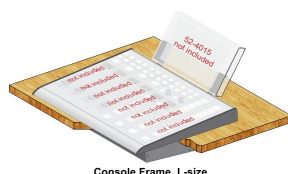
Note: Housing not included!

- . replaces 52-4515A, 52-4515B
- . invers function available (DIP switch, needs recalibration)

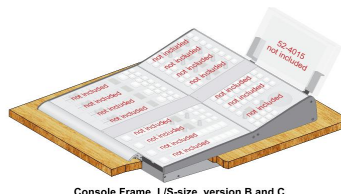
weight: 0.6 kg

power consumption: 7.99 W

7 52/MX Console Frames, angled mounting



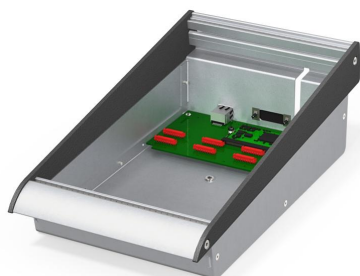
Console Frame, L-size



Console Frame, L/S-size, version B and C

7.1 52-3804C - Console Frame, 4 pos. L-size

STATUS : ● **PREFERRED PRODUCT**



52-3804C

angled, metal side panels

includes 1 controller to interface

4 L-size 293mm x 42.5mm modules

- . 1 Ethernet RJ45 connector for APC
- . includes talkback mic preamp and

talkback/PFL analog Out for 52-4424B

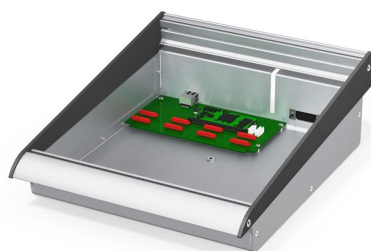
- . audio signals via APC

weight: 1.1 kg

power consumption: 2.56 W

7.2 52-3806C - Console Frame, 6 pos. L-size

STATUS : ● **PREFERRED PRODUCT**



52-3806C

angled, metal side panels

includes 1 controller to interface

6 L-size 293mm x 42.5mm modules

- . 1 Ethernet RJ45 connector for APC
- . includes talkback mic preamp and

talkback/PFL analog Out for 52-4424B

- . audio signals via APC

weight: 1.4 kg

power consumption: 2.56 W

7.3 52-3808C - Console Frame, 8 pos. L-size

STATUS : ● **PREFERRED PRODUCT**



52-3808C

angled, metal side panels

includes 1 controller to interface

8 L-size 293mm x 42.5mm modules

- . 1 Ethernet RJ45 connector for APC
- . includes talkback mic preamp and

talkback/PFL analog Out for 52-4424B

- . audio signals via APC

weight: 1.7 kg

power consumption: 2.56 W

7.4 52-3812C - Console Frame, 12 pos. L-size

STATUS : ● **PREFERRED PRODUCT**



52-3812C

angled, metal side panels

includes 2 controllers to interface

12 L-size 293mm x 42.5mm modules

- . 2 Ethernet RJ45 connector for APC
- . includes talkback mic preamp and

talkback/PFL analog Out for 52-4424B

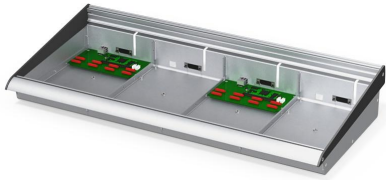
- . audio signals via APC

weight: 2.5 kg

power consumption: 5.12 W

7.5 52-3816C - Console Frame, 16 pos. L-size

STATUS : ● **PREFERRED PRODUCT**



52-3816C

angled, metal side panels

includes 2 controllers to interface

16 L-size 293mm x 42.5mm modules

- . 2 Ethernet RJ45 connectors for APC
- . includes talkback mic preamp and

talkback/PFL analog Out for 52-4424B

- . audio signals via APC

weight: 3.1 kg

power consumption: 5.12 W

7.6 52-3820C - Console Frame, 20 pos. L-size

STATUS : ● **PREFERRED PRODUCT**



52-3820C

angled, metal side panels

includes 3 controllers to interface

20 L-size 293mm x 42.5mm modules

- . 3 Ethernet RJ45 connectors for APC
- . includes talkback mic preamp and

talkback/PFL analog Out for 52-4527B

- . audio signals via APC

weight: 3.9 kg

power consumption: 7.68 W

7.7 52-3824C - Console Frame, 24 pos. L-size

STATUS : ● **PREFERRED PRODUCT**



52-3824C

angled, metal side panels

includes 3 controllers to interface

24 L-size 293mm x 42.5mm modules

- . 3 Ethernet RJ45 connectors for APC
- . includes talkback mic preamp and

talkback/PFL analog Out for 52-4527B

- . audio signals via APC

weight: 4.6 kg

power consumption: 7.68 W

7.8 52-4804C - Console Frame, 4 pos. L/S-size

STATUS : ● **PREFERRED PRODUCT**



52-4804C

dimensions 180mm width

includes 1 controller to interface

4 L-size and 4 S-size 42.5mm modules

- . 1 RJ45 connector to APC port
- . aluminium handrest, metal side panels
- . includes TFT display mounts

weight: 2.0 kg

power consumption: 2.56 W

7.9 52-4808C - Console Frame, 8 pos. L/S-size

STATUS : ● **PREFERRED PRODUCT**



52-4808C

dimensions 350 mm width

includes 2 controllers to interface

8 L-size and 8 S-size 42.5 mm modules

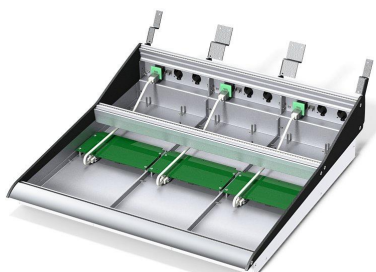
- . 2 RJ45 connectors to APC port
- . aluminium handrest, metal side panels
- . includes TFT display mounts

weight: 3.5 kg

power consumption: 5.12 W

7.10 52-4812C - Console Frame, 12 pos. L/S-size

STATUS : ● **PREFERRED PRODUCT**



52-4812C

520mm width, metal side panels

includes 3 controllers to interface

12 L-size and 12 S-size 42.5mm modules

- . includes TFT display mounts
- . 3 Ethernet RJ45 connectors for APC
- . includes talkback mic preamp and

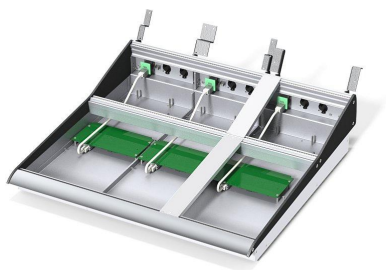
talkback/PFL analog Out for 52-4424/4527B

weight: 4.5 kg

power consumption: 7.68 W

7.11 52-4813C - Console Frame, 12+ pos. L/S-size

STATUS : ● **PREFERRED PRODUCT**



52-4813C

562.5mm width, metal side panels

includes 3 controllers to interface

12 L-size and 12 S-size 42.5mm modules

- . includes TFT display mounts
- . 3 Ethernet RJ45 connectors for APC
- . includes talkback mic preamp and

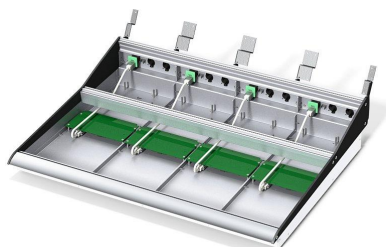
talkback/PFL analog Out for 52-4424/4527B

weight: 4.7 kg

power consumption: 7.68 W

7.12 52-4816C - Console Frame, 16 pos. L/S-size

STATUS : ● **PREFERRED PRODUCT**



52-4816C

dimensions 690mm width

includes 4 controllers to interface

16 L-size and 16 S-size 42.5mm modules

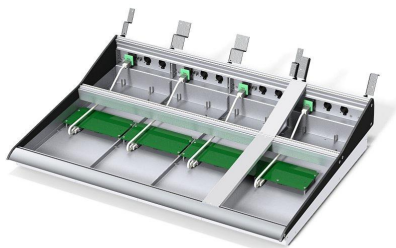
- . 4 RJ45 connectors to APC port
- . aluminium handrest, metal side panels
- . includes TFT display mounts

weight: 7.0 kg

power consumption: 10.24 W

7.13 52-4817C - Console Frame, 16+ pos. L/S-size

STATUS : ● PREFERRED PRODUCT



52-4817C

dimensions 732.5mm width

includes 4 controllers to interface

16 L-size and 16 S-size 42.5mm modules

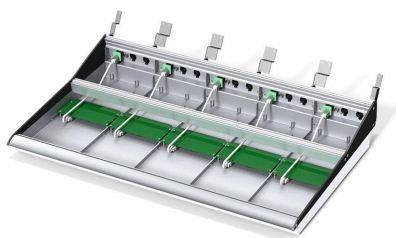
- . 4 RJ45 connectors to APC port
- . aluminium handrest, metal side panels
- . includes 1 pair of blank panels
- . includes TFT display mounts

weight: 6.2 kg

power consumption: 10.24 W

7.14 52-4820C - Console Frame, 20 pos. L/S-size

STATUS : ● PREFERRED PRODUCT



52-4820C

dimensions 860mm width

includes 5 controllers to interface

20 L-size and 20 S-size 42.5mm modules

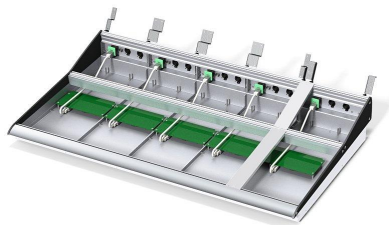
- . 5 RJ45 connectors to APC port
- . aluminium handrest, metal side panels
- . includes TFT display mounts

weight: 8.5 kg

power consumption: 12.80 W

7.15 52-4821C - Console Frame, 20+ pos. L/S-size

STATUS : ● **PREFERRED PRODUCT**



52-4821C

dimensions 902.5mm width

includes 5 controllers to interface

20 L-size and 20 S-size 42.5mm modules

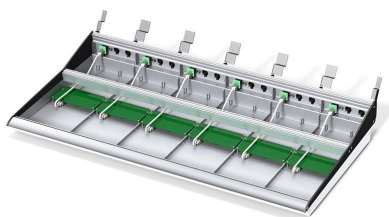
- . 5 RJ45 connectors to APC port
- . aluminium handrest, metal side panels
- . includes 1 pair of blank panels
- . includes TFT display mounts

weight: 7.4 kg

power consumption: 12.80 W

7.16 52-4824C - Console Frame, 24 pos. L/S-size

STATUS : ● **PREFERRED PRODUCT**



52-4824C

dimensions 1030mm width

includes 6 controllers to interface

24 L-size and 24 S-size 42.5mm modules

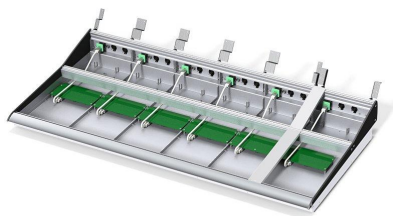
- . 6 RJ45 connectors to APC port
- . aluminium handrest, metal side panels
- . includes TFT display mounts

weight: 8.5 kg

power consumption: 15.36 W

7.17 52-4825C - Console Frame, 24+ pos. L/S-size

STATUS : ● PREFERRED PRODUCT



52-4825C

dimensions 1072.5mm width

includes 6 controllers to interface

24 L-size and 24 S-size 42.5mm modules

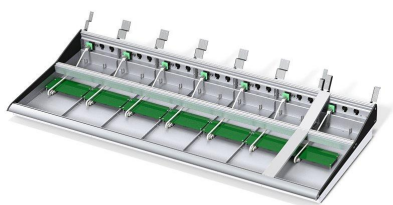
- . 6 RJ45 connectors to APC port
- . aluminium handrest, metal side panels
- . includes 1 pair of blank panels
- . includes TFT display mounts

weight: 11.0 kg

power consumption: 15.36 W

7.18 52-4829C - Console Frame, 28+ pos. L/S-size

STATUS : ● PREFERRED PRODUCT



52-4829C

dimensions 1242.5mm width

includes 7 controllers to interface

28 L-size and 28 S-size 42.5mm modules

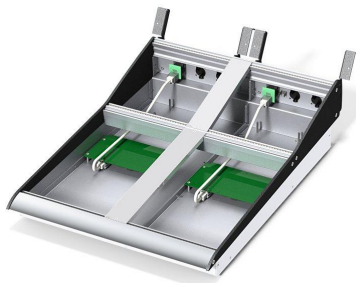
- . 7 RJ45 connectors to APC port
- . aluminium handrest, metal side panels
- . includes 1 pair of blank panels
- . includes TFT display mounts

weight: 12.5 kg

power consumption: 17.92 W

7.19 52-4908C - Console Frame, 8+ pos. L/S-size

STATUS : ● **PREFERRED PRODUCT**



52-4908C

dimensions 392.5mm width

incl. 2 controllers to interface

8 L-size and 8 S-size 42.5mm modules

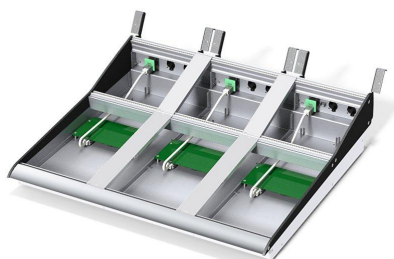
- . 2 RJ45 connectors to APC port
- . aluminium handrest, metal side panels
- . includes 1 pair of blank panels
- . includes TFT display mounts

weight: 4.5 kg

power consumption: 5.12 W

7.20 52-4912C - Console Frame, 12+ pos. L/S-size

STATUS : ● **PREFERRED PRODUCT**



52-4912C

dimensions 605mm width

includes 3 controllers to interface

12 L-size and 12 S-size 42.5mm modules

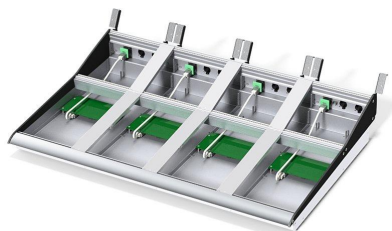
- . 3 RJ45 connectors to APC port
- . aluminium handrest, metal side panels
- . includes 2 pairs of blank panels
- . includes TFT display mounts

weight: 5.4 kg

power consumption: 7.68 W

7.21 52-4916C - Console Frame, 16+ pos. L/S-size

STATUS : ● PREFERRED PRODUCT



52-4916C

dimensions 817.5mm width

includes 4 controllers to interface

16 L-size and 16 S-size 42.5mm modules

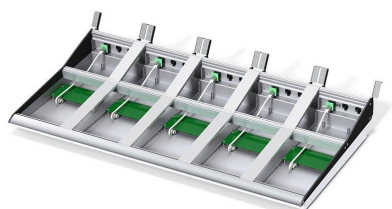
- . 4 RJ45 connectors to APC port
- . aluminium handrest, metal side panels
- . includes 3 pairs of blank panels
- . includes TFT display mounts

weight: 8.5 kg

power consumption: 10.24 W

7.22 52-4920C - Console Frame, 20+ pos. L/S-size

STATUS : ● PREFERRED PRODUCT



52-4920C

dimensions 1030mm width

includes 5 controllers to interface

20 L-size and 20 S-size 42.5mm modules

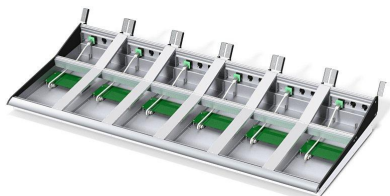
- . 5 RJ45 connectors to APC port
- . aluminium handrest, metal side panels
- . includes 4 pairs of blank panels
- . includes TFT display mounts

weight: 10.5 kg

power consumption: 12.80 W

7.23 52-4924C - Console Frame, 24+ pos. L/S-size

STATUS : ● **PREFERRED PRODUCT**



52-4924C

dimensions 1242.5mm width

includes 6 controllers to interface

24 L-size and 24 S-size 42.5mm modules

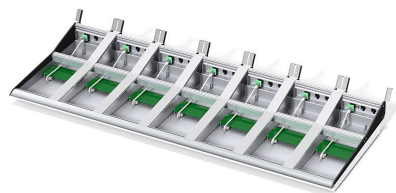
- . 6 RJ45 connectors to APC port
- . aluminium handrest, metal side panels
- . includes 5 pairs of blank panels
- . includes TFT display mounts

weight: 10.4 kg

power consumption: 15.36 W

7.24 52-4928C - Console Frame, 28+ pos. L/S-size

STATUS : ● **PREFERRED PRODUCT**



52-4928C

dimensions 1455mm width

includes 7 controllers to interface

28 L-size and 28 S-size 42.5mm modules

- . 7 RJ45 connectors to APC port
- . aluminium handrest, metal side panels
- . includes 6 pairs of blank panels
- . includes TFT display mounts

weight: 14.0 kg

power consumption: 17.92 W

8 52/MX Table Installation Frames, flat mounting



Table Installation Frame, S-size

Table Installation Frame, L-size

Table Installation Frame, L-size with gaps

8.1 52-3604A - Table Inst. Frame, 4 pos. L-size

STATUS : ● PRODUCT WITH POTENTIAL DELIVERY TIMES



52-3604A

table installation frame

includes 1 controller to interface

4 L-size 293mm x 42.5mm modules

. 1 Ethernet RJ45 connector for PoE

weight: 1.6 kg

power consumption: 2.56 W

8.2 52-3604C - Table Inst. Frame, 4 pos. L-size

STATUS : ● PREFERRED PRODUCT



52-3604C

table installation frame

includes 1 controller to interface

4 L-size 293mm x 42.5mm modules

. 1 Ethernet RJ45 connector for APC

. includes talkback mic preamp and

talkback/PFL analog Out for 52-4424B

. audio signals via APC

weight: 1.6 kg

power consumption: 2.56 W

8.3 52-3605C - Table Inst. Frame, 5 pos. L-size

STATUS : ● PRODUCT WITH POTENTIAL DELIVERY TIMES



52-3605C

table installation frame

includes 1 controller to interface

5 L-size 293mm x 42.5mm modules

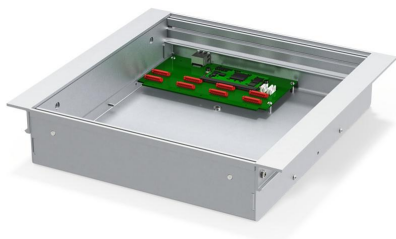
- . 1 Ethernet RJ45 connector for APC
- . includes talkback mic preamp and talkback/PFL analog Out for 52-4424B
- . audio signals via APC

weight: 1.5 kg

power consumption: 2.56 W

8.4 52-3606C - Table Inst. Frame, 6 pos. L-size

STATUS : ● PREFERRED PRODUCT



52-3606C

table installation frame

includes 1 controller to interface

6 L-size 293mm x 42.5mm modules

- . 1 Ethernet RJ45 connector for APC
- . includes talkback mic preamp and talkback/PFL analog Out for 52-4424B
- . audio signals via APC

weight: 1.4 kg

power consumption: 2.56 W

8.5 52-3608C - Table Inst. Frame, 8 pos. L-size

STATUS : ● PREFERRED PRODUCT



52-3608C

table installation frame

includes 1 controller to interface

8 L-size 293mm x 42.5mm modules

- . 1 Ethernet RJ45 connector for APC
- . includes talkback mic preamp and

talkback/PFL analog Out for 52-4424B

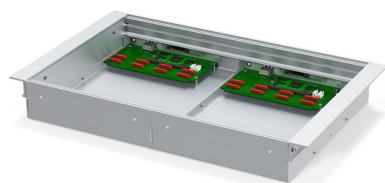
- . audio signals via APC

weight: 1.7 kg

power consumption: 2.56 W

8.6 52-3610C - Table Inst. Frame, 10 pos. L-size

STATUS : ● PREFERRED PRODUCT



52-3610C

table installation frame

includes 2 controllers to interface

10 L-size 293mm x 42.5mm modules

- . 2 Ethernet RJ45 connectors for APC
- . includes talkback mic preamp and

talkback/PFL analog Out for 52-4424B

- . audio signals via APC

weight: 2.1 kg

power consumption: 5.12 W

8.7 52-3612C - Table Inst. Frame, 12 pos. L-size

STATUS : ● PREFERRED PRODUCT



52-3612C

table installation frame

includes 2 controllers to interface

12 L-size 293mm x 42.5mm modules

- . 2 Ethernet RJ45 connectors for APC
- . includes talkback mic preamp and

talkback/PFL analog Out for 52-4424B

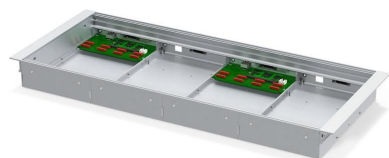
- . audio signals via APC

weight: 2.4 kg

power consumption: 5.12 W

8.8 52-3616C - Table Inst. Frame, 16 pos. L-size

STATUS : ● PREFERRED PRODUCT



52-3616C

table installation frame

includes 2 controllers to interface

16 L-size 293mm x 42.5mm modules

- . 2 Ethernet RJ45 connectors for APC
- . includes talkback mic preamp and

talkback/PFL analog Out for 52-4424B

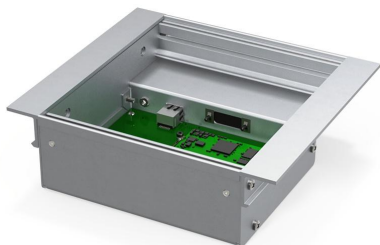
- . audio signals via APC

weight: 3.0 kg

power consumption: 5.12 W

8.9 52-3654C - Table Inst. Frame, 4 pos. S-size

STATUS : ● PREFERRED PRODUCT



52-3654C

table installation frame

includes 1 controller to interface

4 S-size 193mm x 42.5mm modules

- . 1 Ethernet RJ45 connector for APC
- . includes talkback mic preamp and

talkback/PFL analog Out for 52-4527B

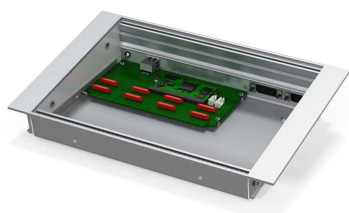
- . audio signals via APC

weight: 0.8 kg

power consumption: 2.56 W

8.10 52-3656C - Table Inst. Frame, 6 pos. S-size

STATUS : ● PREFERRED PRODUCT



52-3656C

table installation frame

includes 1 controller to interface

6 S-size 193mm x 42.5mm modules

- . 1 Ethernet RJ45 connector for APC
- . includes talkback mic preamp and

talkback/PFL analog Out for 52-4527B

- . audio signals via APC

weight: 1.0 kg

power consumption: 2.56 W

8.11 52-3658C - Table Inst. Frame, 8 pos. S-size

STATUS : ● PREFERRED PRODUCT



52-3658C

table installation frame

includes 1 controller to interface

8 S-size 193mm x 42.5mm modules

- . 1 Ethernet RJ45 connector for APC
- . includes talkback mic preamp and

talkback/PFL analog Out for 52-4527B

- . audio signals via APC

weight: 1.4 kg

power consumption: 2.56 W

8.12 52-3660G - Table Inst. Frame, 10 pos. S-size

STATUS : ● PREFERRED PRODUCT



52-3660G

table installation frame

includes 2 controllers to interface

10 S-size 193mm x 42.5mm modules

- . 2 Ethernet RJ45 connectors for APC
- . includes talkback mic preamp and

talkback/PFL analog Out for 52-4424B

- . audio signals via APC

weight: 1.6 kg

power consumption: 5.12 W

8.13 52-3662C - Table Inst. Frame, 12 pos. S-size

STATUS : ● PREFERRED PRODUCT



52-3662C

table installation frame

includes 2 controllers to interface

12 S-size 193mm x 42.5mm modules

- 2 Ethernet RJ45 connectors for APC
- includes talkback mic preamp and

talkback/PFL analog Out for 52-4527B

- audio signals via APC

weight: 2.0 kg

power consumption: 5.12 W

8.14 52-3666C - Table Inst. Frame, 16 pos. S-size

STATUS : ● PREFERRED PRODUCT



52-3666C

table installation frame

includes 2 controllers to interface

16 S-size 193mm x 42.5mm modules

- 2 Ethernet RJ45 connectors for APC
- includes talkback mic preamp and

talkback/PFL analog Out for 52-4527B

- audio signals via APC

weight: 2.5 kg

power consumption: 5.12 W

8.15 52-4604C - Table Inst. Frame, 4 pos. L/S

STATUS : ● PREFERRED PRODUCT



52-4604C

flat, non angled style

includes 1 controller to interface

4 L-size and 4 S-size 42.5mm modules

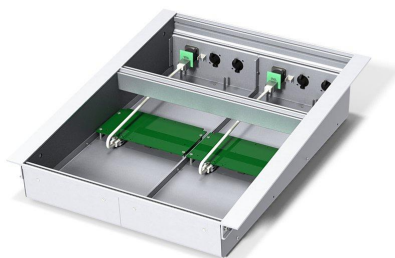
1 RJ45 connector to APC port

weight: 1.9 kg

power consumption: 2.56 W

8.16 52-4608C - Table Inst. Frame, 8 pos. L/S

STATUS : ● PREFERRED PRODUCT



52-4608C

flat, non angled style

includes 2 controllers to interface

8 L-size and 8 S-size 42.5mm modules

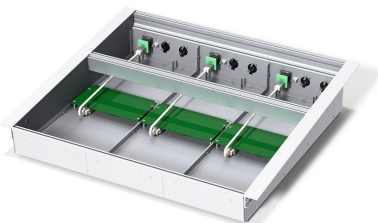
2 RJ45 connectors to APC port

weight: 3.0 kg

power consumption: 5.12 W

8.17 52-4612C - Table Inst. Frame, 12 pos. L/S

STATUS : ● PREFERRED PRODUCT



52-4612C

flat, non angled style

includes 3 controllers to interface

12 L-size and 12 S-size 42.5mm modules

3 RJ45 connectors to APC port

weight: 4.1 kg

power consumption: 7.68 W

9 52/MX Table Top Box, S-size

for S-size modules (193mm), angled, Studio Box or Talk Back applications



9.1 52-3454C - Table Top Box, 4 pos. S-size

STATUS : ● PREFERRED PRODUCT



52-3454C

table top housing

includes 1 controller to interface

4 S-size 193mm x 42.5mm modules

- . 1 Ethernet RJ45 connector for APC
- . includes talkback mic preamp and

talkback/PFL analog Out for 52-4527B

- . audio signals via APC

weight: 1.1 kg

power consumption: 2.56 W

9.2 52-3456C - Table Top Box, 6 pos. S-size

STATUS : ● **PREFERRED PRODUCT**



52-3456C

table top housing

includes 1 controller to interface

6 S-size 193mm x 42.5mm modules

- . 1 Ethernet RJ45 connector for APC
- . includes talkback mic preamp and

talkback/PFL analog Out for 52-4527B

- . audio signals via APC

weight: 1.4 kg

power consumption: 2.56 W

9.3 52-3458C - Table Top Box, 8 pos. S-size

STATUS : ● **PREFERRED PRODUCT**



52-3458C

table top housing

includes 1 controller to interface

8 S-size 193mm x 42.5mm modules

- . 1 Ethernet RJ45 connector for APC
- . includes talkback mic preamp and

talkback/PFL analog Out for 52-4527B

- . audio signals via APC

weight: 1.6 kg

power consumption: 2.56 W

10 52/MX 19" Installation Frames

Frames for 19" rack installation

10.1 52-3660F - 19" Inst. Frame, 1 TFT + 5 pos.

STATUS : ● **PREFERRED PRODUCT**



52-3660F

19" rack installation frame

includes 1 controller to interface

5 S-size 193mm x 42.5mm modules

- . 1 Ethernet RJ45 connector for APC
- . includes talkback mic preamp and

talkback/PFL analog Out for 52-4527B

- . audio signals via APC

weight: 1.6 kg

power consumption: 2.56 W

10.2 52-3660D - 19" housing for 2xTFT

STATUS : ● **PREFERRED PRODUCT**



52-3660D

19" rack housing

simple frame with no controller

for 2 pieces 52-4515 or

blank panels

weight: 1.5 kg

11 19" Q-Panel

Q-Panel for operation with 52/RM4200D DSP Frame and 52/XR MAD I Router

11.1 52-6500A - XR/MX Q-Panel Frame, 19" 1U

STATUS : ● **PREFERRED PRODUCT**



52-6500A

for up to 4 Q-size control panels

Ethernet control interface, RJ45

Power over Ethernet or aux. 48V

for 52/XR, 52/MX, 52/RM4200D

no control panels included

weight: 0.9 kg

power consumption: 2.56 W

11.2 52-6501A - XR/MX Q-Panel Frame, half size

STATUS : ● PREFERRED PRODUCT



52-6501A

for up to 2 Q-size control panels

Ethernet control interface, RJ45

Power over Ethernet or aux. 48V

for 52/XR, 52/MX, 52/RM4200D

no control panels included

weight: 0.6 kg

power consumption: 2.56 W

11.3 52-6504A - Q-Panel, 2 encoders, 4 buttons

STATUS : ● PREFERRED PRODUCT



52-6504A

2 rotary encoders

32 character ASCII LED display

4 EAO pushbuttons, 2 colours,

film caps

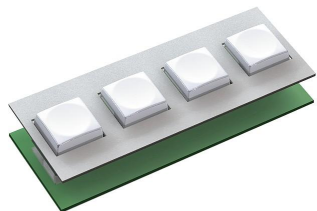
. for 52-6500

weight: 0.1 kg

power consumption: 0.10 W

11.4 52-6505A - Q-Panel, 4 large buttons

STATUS : ● PREFERRED PRODUCT



52-6505A

4 EAO pushbuttons, 3 colours,

film caps

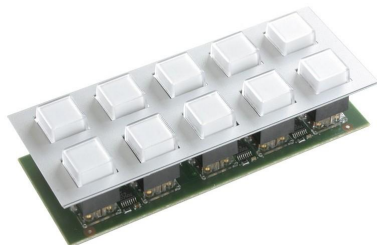
. for 52-6500, 52-6501

weight: 0.1 kg

power consumption: 0.10 W

11.5 52-6510A - Q-Panel, 10 push buttons

STATUS : ● PREFERRED PRODUCT



52-6510A

10 EAO pushbuttons, 2 colours,

film caps

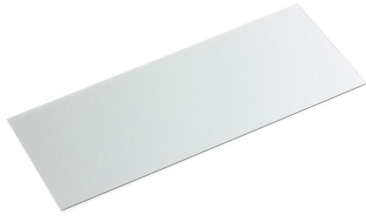
. for 52-6500

weight: 0.1 kg

power consumption: 0.30 W

11.6 52-6590A - Q-Panel, blank

STATUS : ● PREFERRED PRODUCT



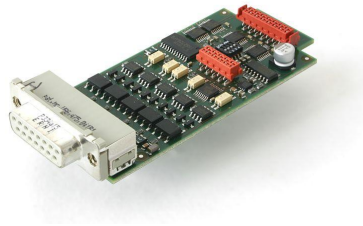
52-6590A

for 52-6500

weight: 0.0 kg

11.7 52-6509A - GPIO push button module

STATUS : ● PREFERRED PRODUCT



52-6509A

for 52-6500, 52-6501, 52-36xx,

52-38xx housings

- DSUB-15 female connector for
5 GPIs (5...24V), 5 GPO (200mA/30V)

3 Potentiometers (additional DSUB15)

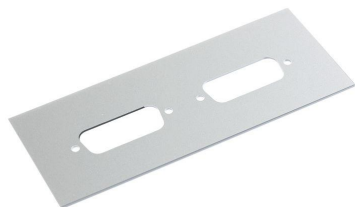
- Toolbox configuration as 52-4505
- ask factory before ordering

weight: 0.0 kg

power consumption: 0.10 W

11.8 52-6592A - Q-Panel, front 2 x D-Sub-15

STATUS : ● **PREFERRED PRODUCT**



52-6592A

for 52-6500/6501

front panel for 2 x D-Sub-15

52-6509 needs to be ordered seperately

weight: 0.0 kg

Index

1

- 19" housing for 2xTFT (52-3660D) 48
 19" Inst. Frame, 1 TFT + 5 pos. (52-3660F) 47

A

- Adjustable Stand for 52-4015 (52-3016A) 22

C

- Console Frame, 12 pos. L/S-size (52-4812C) 29
 Console Frame, 12 pos. L-size (52-3812C) 26
 Console Frame, 12+ pos. L/S-size (52-4813C) 30
 Console Frame, 12+ pos. L/S-size (52-4912C) 34
 Console Frame, 16 pos. L/S-size (52-4816C) 30
 Console Frame, 16 pos. L-size (52-3816C) 27
 Console Frame, 16+ pos. L/S-size (52-4817C) 31
 Console Frame, 16+ pos. L/S-size (52-4916C) 35
 Console Frame, 20 pos. L/S-size (52-4820C) 31
 Console Frame, 20 pos. L-size (52-3820C) 27
 Console Frame, 20+ pos. L/S-size (52-4821C) 32
 Console Frame, 20+ pos. L/S-size (52-4920C) 35
 Console Frame, 24 pos. L/S-size (52-4824C) 32
 Console Frame, 24 pos. L-size (52-3824C) 28
 Console Frame, 24+ pos. L/S-size (52-4825C) 33
 Console Frame, 24+ pos. L/S-size (52-4924C) 36
 Console Frame, 28+ pos. L/S-size (52-4829C) 33
 Console Frame, 28+ pos. L/S-size (52-4928C) 36
 Console Frame, 4 pos. L/S-size (52-4804C) 28
 Console Frame, 4 pos. L-size (52-3804C) 25
 Console Frame, 6 pos. L-size (52-3806C) 25
 Console Frame, 8 pos. L/S-size (52-4808C) 29
 Console Frame, 8 pos. L-size (52-3808C) 26
 Console Frame, 8+ pos. L/S-size (52-4908C) 34
 Console mounting kit for 52-4015 (52-3014A) 21
 Console mounting kit for 52-4018 (52-3010A) 23

- Control Module, 1 potentiometer (52-4401B) 8
 Control Module, 12 buttons (52-4422A) 12
 Control Module, 17 buttons (52-4410A) 10
 Control Module, 19 buttons (52-4412A) 11
 Control Module, 2 encoders (52-4302A) 14
 Control Module, 2 potentiometers (52-4305B) 16
 Control Module, 2 potentiometers (52-4402B) 9
 Control Module, 4 potentiometers (52-4404B) 9

F

- Fader Module, P&G (52-4240B) 6
 Fader Module, P&G (52-4260B) 7
 Fader/Encoder Module, P&G (52-4230A) 5
 Fader/Encoder Module, P&G (52-4250C) 7

G

- GPIO push button module (52-6509A) 51

L

- Line Control Module (52-4528A) 18
 Loudspeaker/Control Module (52-4527A) 17
 Loudspeaker/Control Module (52-4527B) 18
 Loudspeaker/Control Module, large (52-4424A) 13
 Loudspeaker/Control Module, large (52-4424B) 13
 Lower blanking plate (52-4490A) 14

M

- Mot-Fader/Encoder Module, P&G (52-4231B) 5
 Motor Fader Module, P&G (52-4241B) 6
 Motor Fader Module, P&G (52-4261B) 8

P

- Pushbutton Module, 11 buttons (52-4411A) 10
 Pushbutton Module, 16 buttons (52-4516A) 17

Pushbutton Module, 21 buttons (52-4421A)	12
Pushbutton Module, 5 buttons (52-4505A)	16

Q

Q-Panel, 10 push buttons (52-6510A)	50
Q-Panel, 2 encoders, 4 buttons (52-6504A)	49
Q-Panel, 4 large buttons (52-6505A)	50
Q-Panel, blank (52-6590A)	51
Q-Panel, front 2 x D-Sub-15 (52-6592A)	52

T

Table Inst. Frame, 12 pos. L/S (52-4612C)	45
Table Inst. Frame, 4 pos. L/S (52-4604C)	44
Table Inst. Frame, 4 pos. L-size (52-3604A)	37
Table Inst. Frame, 4 pos. L-size (52-3604C)	37
Table Inst. Frame, 4 pos. S-size (52-3654C)	41
Table Inst. Frame, 5 pos. L-size (52-3605C)	38
Table Inst. Frame, 6 pos. L-size (52-3606C)	38
Table Inst. Frame, 6 pos. S-size (52-3656C)	41
Table Inst. Frame, 8 pos. L/S (52-4608C)	44
Table Inst. Frame, 8 pos. L-size (52-3608C)	39
Table Inst. Frame, 8 pos. S-size (52-3658C)	42
Table Inst. Frame, 10 pos. L-size (52-3610C)	39
Table Inst. Frame, 10 pos. S-size (52-3660G)	42
Table Inst. Frame, 12 pos. L-size (52-3612C)	40
Table Inst. Frame, 12 pos. S-size (52-3662C)	43
Table Inst. Frame, 16 pos. L-size (52-3616C)	40
Table Inst. Frame, 16 pos. S-size (52-3666C)	43
Table Top Box, 4 pos. S-size (52-3454C)	45
Table Top Box, 6 pos. S-size (52-3456C)	46
Table Top Box, 8 pos. S-size (52-3458C)	47
Table Top Stand for 52-4015 (52-3015A)	21
Table Top Stand for 52-4017 (52-3017A)	23
TFT Control Module, 4 encoders (52-4304A)	15
TFT Control Module, 6 encoders (52-4306A)	15
TFT Control Module, L-size (52-4414A)	11
TFT Display, touch, for housing (52-4515C)	24
TFT/Touch Display, 7" IPS (52-4018A)	22
TFT/Touch Display, 8.4" (52-4015C)	20

U

Upper Blanking Plate (52-4590A)	19
Upper Mic/Headphone Plate (52-4592B)	19
Upper Microphone XLR Plate (52-4592A)	19

X

XR/MX Q-Panel Frame, 19" 1U (52-6500A)	48
XR/MX Q-Panel Frame, half size (52-6501A)	49